

Mass: Upon the Square (2nd setting)

Edited by Jason Smart

William Mundy (c.1529–1591)

Kyrie

Countertenor 1

Countertenor 2

Tenor

Bass

Ky - ri - e - lei -

Ky - ri - e - lei - - - -

Ky - ri - e - lei - - - -

3

- - - - son, Ky - ri - e - lei - - - - son,

- son, Ky - ri - e - lei - - - - son, Ky - ri - e - lei -

- son, Ky - ri - e - lei - - - - son, Ky -

6

Ky - ri - e - lei - son.

- - - - son. Ky - - - ri - e -

- ri - e - lei - - - - son. Ky - ri - e - lei -

9

Ky - ri - e - lei - - - - - son,

- lei - - - - - son, Ky - ri - e - lei -

- - - - - son, Ky - ri - e -

12

Ky - ri - e - lei - - - - son, Ky - ri - e - lei - son.

- - - - son, Ky - ri - e - lei - - - - son.

- lei - - - - son, Ky - ri - e - lei - - - - son.

15

Chri - ste e - lei - - - - son, Chri - ste e - lei - - - -

Chri - ste e - lei - - - - son, Chri -

Chri - ste e - lei - - - - son, Chri - ste e -

19

- son, Chri - ste e - lei - - - - son.

- ste e - lei - - - - - son.

- lei - - - - - son.

Chri - ste e -

23

Chri - ste e - lei - - - - -

- lei - - - - - son, Chri - ste e -

- lei - - - - - son, Chri - ste e - lei - - - - -

26

- - son, Chri - ste e - lei - son.

Ky - ri - e -

- lei - - - - - son.

- son, Chri - ste e - lei - - - - son. Ky - ri -

30

- lei - - - - - son, Ky - ri - e -
Ky - ri - e - lei - - - son, Ky - ri - e - lei - - -
- e - lei - son, Ky - ri - e - lei - - - son, Ky - ri - e -

34

Ky - ri -
- lei - - - son.
- son, Ky - ri - e - lei - son. Ky - ri - e - lei -
- lei - - - son. Ky - ri - e - lei -

37

- e - lei - son, Ky - ri - e - lei - - - son.
Ky - ri - e - lei - son, Ky - ri - e - lei - - - son.
- son, Ky - ri - e - lei - son.
- son, Ky - ri - e - lei - son.

Gloria

Celebrant

Glo - ri - a in ex - cel - sis De - o.

Et in ter - ra pax ho - mi - ni - bus bo - nae vo - lun - ta -

Et in ter - ra pax ho - mi - ni - bus bo - nae vo - lun - ta -

Et in ter - ra pax ho - mi - ni - bus

6

- tis, bo - nae vo - lun - ta - tis.

- tis, bo - nae vo - lun - ta - - - - - tis. Lau -

bo - nae vo - lun - ta - - - - - tis. Lau - da - mus

11

Lau - da - mus te. Be - ne - di - ci - mus te, be - ne di - ci - mus

- da - mus te. Be - ne - di - ci - mus te, be - ne - di - ci - mus

te. Be - ne - di - ci - mus te, be - ne - di - ci - mus

16

te. A - do - ra - mus te, Glo - ri - fi - ca - mus

te. A - do - ra - mus te, Glo - ri - fi -

te. A - do - ra - mus te, a - do - ra - mus te, Glo - ri - fi -

21

te, glo - ri - fi - ca - mus te. Gra - ti -

- ca - mus te, glo - ri - fi - ca - mus te.

- ca - mus te, glo - ri - fi - ca - mus te. Gra - ti -

26

Gra - ti - as a - gi - mus ti - - - bi pro - pter ma - gnam glo - ri - am

- as a - gi - mus ti - - - bi pro - pter ma -

- as a - gi - mus ti - - - bi pro - pter

31

tu - am, pro - pter ma - gnam glo - ri - am tu - - - - -
 - gnam glo - ri - am tu - am, *pro - pter ma - gnam glo - ri - am* tu - - - - -
 ma - gnam glo - ri - am tu - - - - -

36

- am, Do - mi - ne De - us, rex - - - - -
 - am, Do - mi - ne De - us, rex cae - le - stis, rex - - - - -
 - am, Do - mi - ne De - - - - - us, rex cae -

41

- cae - le - stis, De - us Pa - ter o - mni - po - - - - -
 - cae - le - stis, De - us Pa - ter o - mni - po - tens, De - us Pa - - - - -
 - le - - - - - stis, De - us Pa - ter o - mni - po -

45

- tens, De - us Pa - ter o - mni - po - tens, o - mni - po - tens.

- ter o - mni - po - - - - tens, o - mni - po - tens.

- tens, De - us Pa - ter o - mni - po - tens.

49

Do - mi - ne Fi - li u - ni - ge - ni - te,

Do - mi - ne Fi - li u - ni - ge -

Do - mi - ne Fi - - - - -

53

u - ni - ge - ni - - - - te, Je - su Chri -

- ni - te, _____ u - ni - ge - ni - - - - te, Je -

- li u - ni - ge - ni - te, Je - su Chri -

57

- ste, Je - su Chri - ste, Do - mi-ne
 - su Chri - - - ste,
 - - - ste, Do - mi-ne De - us, A -
 Do - mi - ne De -

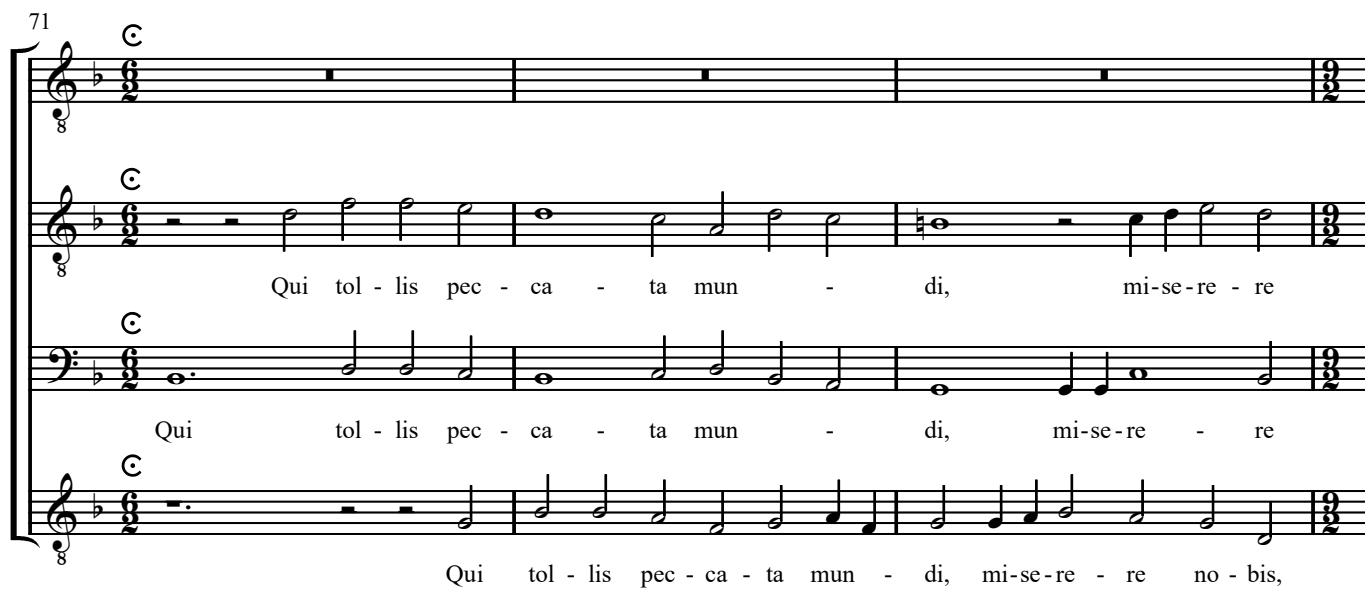
62

De - us, A - gnus De - - - i, A - gnus De - i, Fi - li - us
 Do - mi-ne De - us, A - gnus De - i,
 - gnus De - - - i, Do - mi-ne De - us A - gnus De - i, Fi -
 - us, A - gnus De - - - i,

66

Pa - tris, Fi - li-us Pa - tris, Fi - li-us Pa - tris.
 Fi - li-us Pa - tris, Fi - li-us Pa - tris.
 - li-us Pa - tris, Fi - li-us Pa - tris, Fi - li-us Pa - tris.
 Fi - li - us Pa - - - - - tris.

71

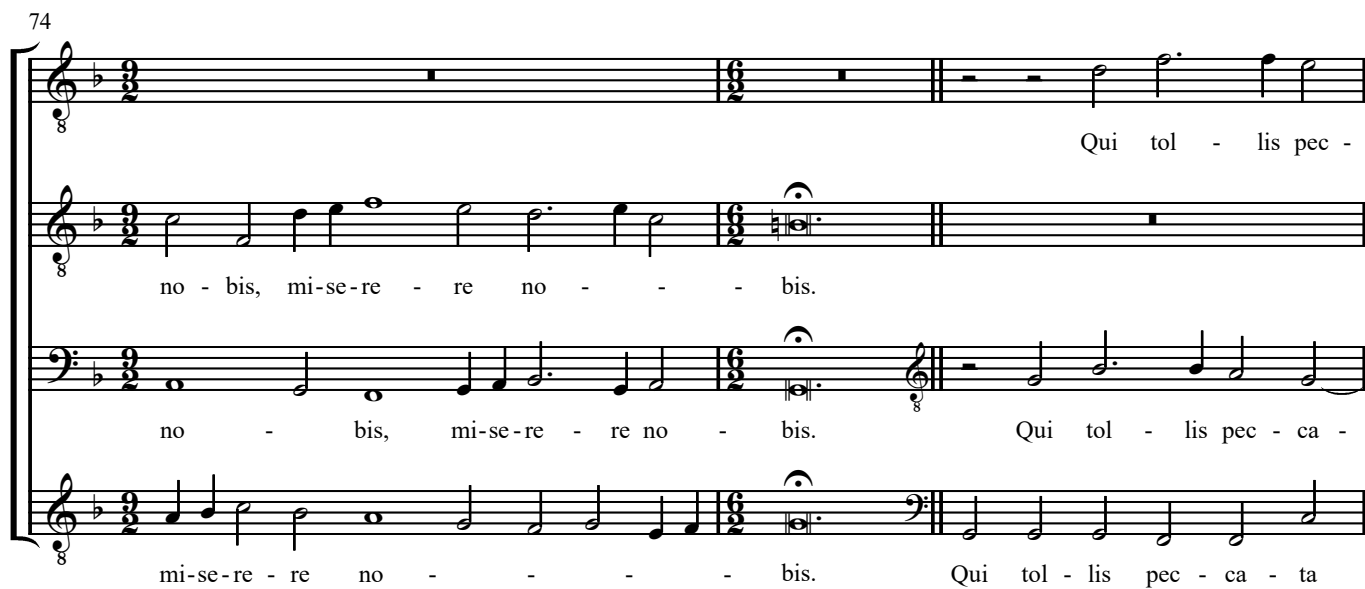


Qui tol - lis pec - ca - ta mun - di, mi-se-re - re

Qui tol - lis pec - ca - ta mun - di, mi-se-re - re

Qui tol - lis pec - ca - ta mun - di, mi-se-re - re no - bis,

74



no - bis, mi-se-re - re no - - - bis.

no - bis, mi-se-re - re no - bis. Qui tol - lis pec - ca -

mi-se-re - re no - - - - - bis. Qui tol - lis pec - ca - ta

77



- ca - ta mun - di, su - sci-pe de - pre-ca - ti - o-nem no - stram, su -

- ta mun - di, su - sci-pe de - pre-ca - ti - o - nem no - stram, su - sci-pe

mun - di, su - sci - pe de-pre-ca - ti - o - nem no -

80

- sci-pe de-pre-ca-ti-o - nem no - stram. Qui se - des ad
 de - pre-ca-ti-o - nem no - stram. Qui se - des ad
 - - - - - stram. Qui se - des ad dex - te-ram Pa -

84

dex - te-ram Pa - tris, mi-se-re-re no -
 dex - te-ram Pa - tris, mi-se-re-re
 - - tris, qui se - des ad dex - te-ram Pa - tris, mi-se -

88

- bis, mi-se-re-re no - bis, mi-se-re-re no - bis.
 no - bis.
 - re-re no - bis, mi-se-re-re no - bis, mi-se-re-re no - bis.

92

Quo - ni - am tu so - lus san - ctus,

Quo - ni - am tu so - lus san - ctus,

Quo - ni - am tu so - lus san - ctus,

97

tu so - lus Do - mi - nus, tu so - lus Do - mi - nus, tu so - lus al - tis - si - mus, —

tu so - lus Do - mi - nus, tu so - lus Do - mi - nus, tu

tu so - lus Do - mi - nus, tu so - lus Do - mi - nus, tu so - lus al -

102

— tu so - lus al - tis - si - mus, Je - su Chri - ste,

so - lus al - tis - si - mus, Je - su Chri - ste,

- tis - si - mus, Je - su Chri - ste,

106

cum San - cto Spi - ri - tu,
cum San - cto Spi - ri - tu,
cum San - cto Spi - ri - tu,
cum San - cto Spi - ri - tu, cum San -

109

- tu, cum San - cto Spi - ri - tu
cum San - cto Spi - ri - tu in glo - ri - a De - i
cum San - cto Spi - ri - tu in glo - ri - a
- cto Spi - ri - tu in glo - ri - a, in

112

in glo - ri - a De - i Pa - - - tris,
Pa - - - tris, in glo - ri - a De - i Pa -
De - i Pa - - - tris, in glo - ri - a De -
glo - ri - a De - i Pa - - - tris, in glo - ri - a

115

in glo - ri - a De - i Pa - - - tris, in glo - ri - a
 - tris, in glo - ri - a De - i Pa - tris,
 - i Pa - - - - -
 De - i Pa - - - - - tris, in glo - ri - a

118

De - i Pa - tris. A - - - - -
 in glo - ri - a De - i Pa - tris. A - - - - -
 - tris, in glo - ri - a De - i Pa - tris. A - - - - -
 De - i Pa - tris. A - - - - -

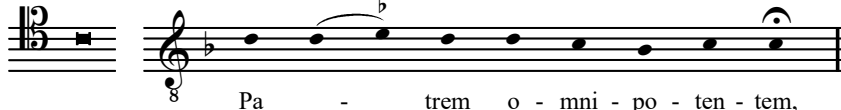
121

- - - - - men.
 - - - - - men.
 - - - - - men.
 - - - - - men.

Credo

Celebrant

Cre - do in u - num De - um,

2 rulers of the choir

Pa - trem o - mni - po - ten - tem,

fa - cto - rem cae - li et ter - rae, vi - si - bi - li - um

fa - cto - rem cae - li et ter - rae, vi - si - bi - li - um o -

fa - cto - rem cae - li et ter - rae, vi - si -

o - mni - um et in - vi - si - bi - li - um, et in - vi - si - bi - li -

- mni - um et in - vi - si - bi - li - um, et in - vi - si - bi - li -

- bi - li - um o - mni - um et in - vi - si - bi - li -

- um.

Et in u - num Do - mi - num Je - sum Chri -

- um. Et in u - num Do - mi - num Je - sum Chri -

- um. Et in u - num Do - mi - num Je - sum Chri -

11

- stum, Fi - li - um De - i u - ni - ge - ni -

- stum, Fi - li - um De - i u - ni - ge -

- stum, Fi - li - um De - - - i u - ni - ge - ni - - - -

14

- tum, u - ni - ge - ni - - - tum; et ex Pa - tre

- ni - - - tum;

- tum, u - ni - ge - ni - - tum; et ex Pa - tre

17

Pa - tre na - tum an - te o - mni-a, an - te o - mni-a sae - cu - la.

na - tum an - te o - mni-a sae - cu - la, sae - cu - la.

na - tum an - te o - mni-a sae - cu - - - - la.

21

De - um de De - o, Lu - men de Lu - mi - ne,

De - um de De - o, Lu - men de Lu - mi-ne, De - um

De - um de De - o, Lu - men de Lu - mi-ne, De - um ve - rum de

26

De - um ve - rum de De - o ve - - - ro, De - um

ve - rum de De - o ve - ro, de De - o ve - - -

De - o ve - - - ro, De - um ve - rum de De - o

30

ve - rum de De - o ve - ro, ge - ni-tum non fa - ctum, con-sub-stan-ti -

- - - ro, ge - ni - tum non fa - ctum, con-sub-stan - ti -

ve - - - ro, ge - ni - tum non fa - ctum,

34

- a - lem, con-sub-stan-ti - a - - - - - lem Pa - tri per

- a - lem, con-sub-stan-ti - a - - - - - lem Pa - tri per quem o-mni-a

con-sub-stan-ti - a - - - - - lem, con-sub-stan-ti - a - - - - - lem Pa - tri per quem

38

— quem o - mni - a fa - cta_____ sunt.

fa - cta sunt, o - mni - a fa - cta_____ sunt.

o - mni-a fa - cta_____ sunt, fa - cta_____ sunt.

43

Qui pro - pter nos ho - mi - nes et pro - pter no -

Qui pro - pter nos ho-mi-nes et pro - pter no - - - - - stram

Qui pro - pter nos ho - mi - nes et pro - pter no - - - - - stram, et

Qui pro - pter nos ho - mi - nes et pro - pter no -

48

- stram, et pro - pter no - stram sa - lu - tem de - scen -
 sa - lu - tem de - scen - dit, de - scen - dit de cae -
 pro - pter no - stram sa - lu - tem de - scen - dit de cae - - -
 - stram sa - lu - - - - tem de - scen - dit de cae - - - -

52

- dit de cae - lis,
 - - - - lis, et in - car - na - tus -
 - - - - lis, et in - car - na - tus -
 - - - - lis, et in - car - na - tus - est de

56

est de Spi - ri - tu San - cto ex Ma - ri - a vir - gi - ne, ex Ma -
 est de Spi - ri - tu San - - - - cto ex Ma - ri - a vir - gi -
 Spi - ri - tu San - - - - cto ex Ma - ri - a vir - gi - ne,

59

- ri - a vir - gi - ne, et ho - mo fa - ctus est, et ho - mo fa -
 - ne, ex Ma - ri - a vir - gi - ne, et ho - mo fa - ctus est, et ho -
 ex Ma - ri - a vir - gi - ne, et ho - mo fa - ctus est, et ho -

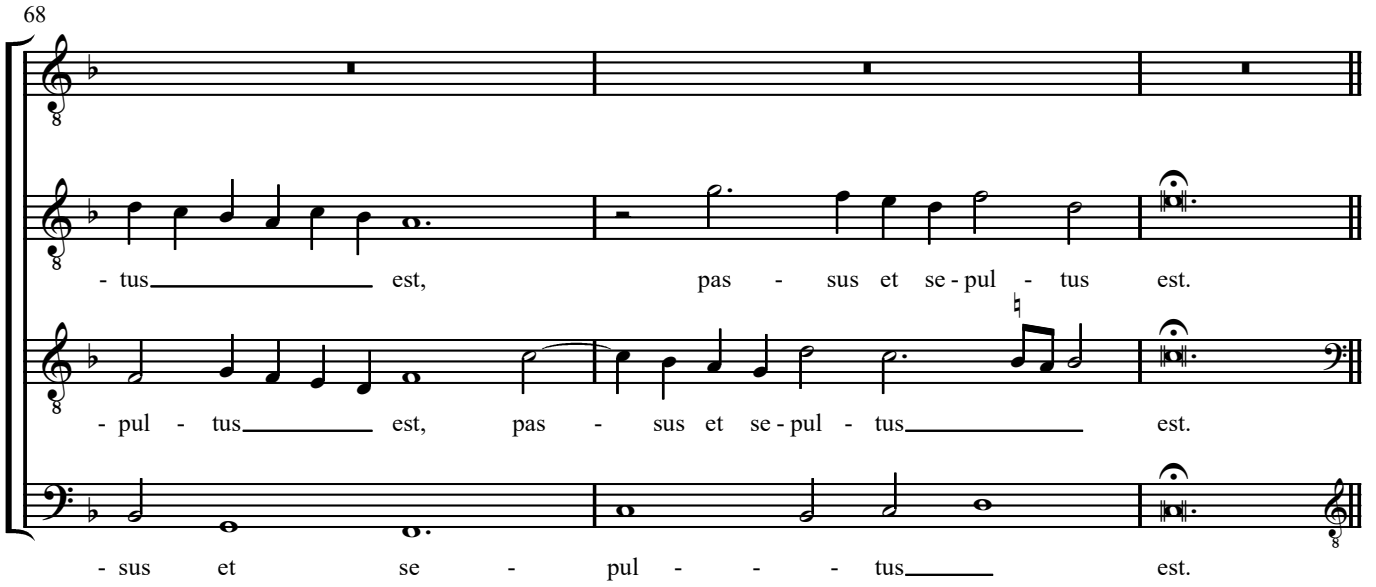
62

- ctus est. Cru - ci - fi - xus e - ti - am pro no -
 - mo fa - ctus est. Cru - ci - fi - xus e - ti - am pro no - bis, pro no -
 - mo fa - ctus est. Cru - ci - fi - xus e - ti - am pro -

65

- bis sub Pon - ti - o Pi - la - to, pas - sus et se - pul -
 - bis sub Pon - ti - o Pi - la - to, pas - sus et se -
 - no - bis sub Pon - ti - o Pi - la - to, pas -

68

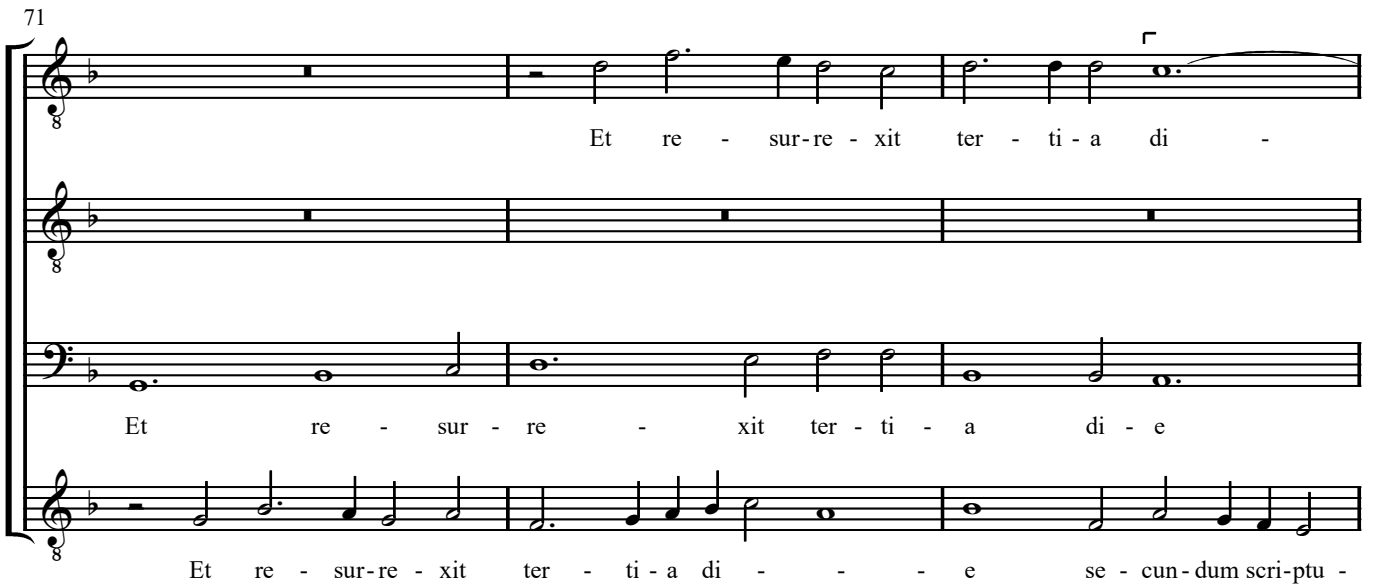


- tus est, pas - sus et se - pul - tus est.

- pul - tus est, pas - sus et se - pul - tus est.

- sus et se - pul - - - tus est.

71

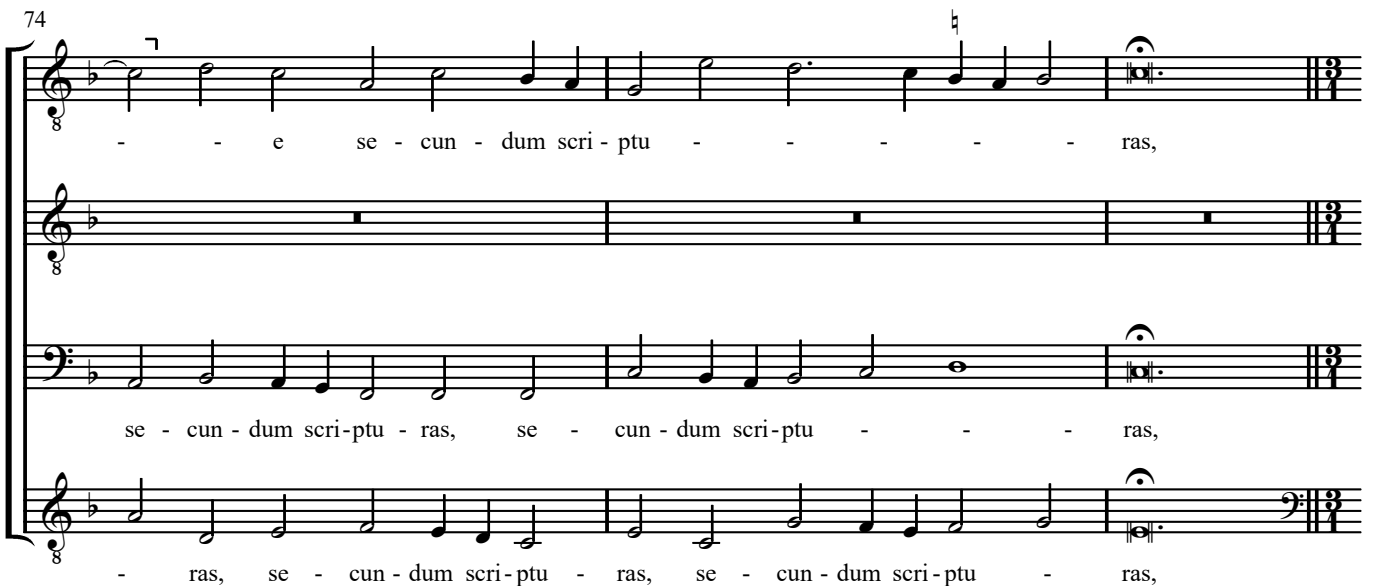


Et re - sur-re - xit ter - ti - a di - e

Et re - sur - re - xit ter - ti - a di - e

Et re - sur-re - xit ter - ti - a di - - - e se - cun - dum scri - ptu -

74



- e se - cun - dum scri - ptu - - - - - ras,

se - cun - dum scri - ptu - - - - - ras,

- ras, se - cun - dum scri - ptu - ras, se - cun - dum scri - ptu - ras,

77

et a-scen - dit in cae - - - - lum,

et a - scen - dit in cae - lum, se - det ad dex - te -

et a - scen - dit in cae - - - lum, se -

80

se - det ad dex - te - ram Pa - tris, se - det ad dex-te-ram Pa -

- ram Pa - - - - tris, se - det ad

- det ad dex - te - ram Pa - - - tris,

83

- - tris, se - det ad dex - te-ram Pa - - tris.

dex - te-ram Pa - - - tris.

ad dex - te-ram Pa - - - tris.

86

Et i - te - rum ven - tu - rus est cum glo - ri -

Et i - te - rum ven - tu - rus est cum glo - ri -

Et i - te - rum ven - tu - rus est cum glo - ri -

89

- a iu - di - ca - re vi - vos et mor - tu - os, vi - vos et mor - tu -

- a iu - di - ca - re vi - vos et mor - tu - os, vi - vos et mor - tu -

- a iu - di - ca - re vi - vos et mor - tu -

92

- os, cu - ius re - gni non e - rit fi - - - nis.

- os, cu - ius re - gni, cu - ius re - gni non e - rit fi - - - nis.

- os, cu - ius re - gni non e - rit fi - - - nis.

96

Et in Spi-ri-tum San - ctum Do - mi - num et vi - vi - fi -

Et in Spi - ri - tum San - ctum Do - mi - num et vi - vi - fi -

Et in Spi - ri - tum San - ctum Do - mi - num et vi - vi - fi -

101

- can - tem, qui ex Pa - tre Fi - li - o, qui ex Pa - tre Fi - li -

- can - tem, ——— qui ——— ex Pa - tre Fi - li - o - que pro -

- can - tem, qui ex Pa - tre Fi - li - - - - o - que

106

- - - o - que pro - ce - - - - - dit,

- ce - dit, - que pro - ce - - - - - dit,

pro - ce - - - - dit, - que pro - ce - - - - dit,

Bars 105–8: Mundy, like some other Tudor composers, misunderstood the grammar of this clause, assuming that its ends *Filio, que procedit*.

111

qui cum Pa - tre et Fi - - - li - o si - mul

qui cum Pa - tre et Fi - li - o

qui cum Pa - tre et Fi - li - o si -

115

a - do - ra - tur, a - do - ra - tur et con - glo - ri - fi -

si - mul a - do - ra - tur. et con - glo -

- mul a - do - ra - tur et con - glo - ri - fi -

119

- ca - - - tur, qui lo - cu - tus

- ri - fi - ca - tur, qui lo - cu - tus est per pro - phe -

- ca - - - tur, qui lo - cu - tus est per

123

est per pro - phe - - - - - tas.

- - - - - tas.

Et u - nam

pro - phe - - - - - tas. Et u - nam san - ctam

127

Et u - nam san - ctam Ca - tho - li - cam et A - po - sto - li -

san - ctam Ca - tho - li - cam et A - po - sto - li -

Ca - tho - li - - - - - cam et A - po - sto - li - cam, et A - po -

130

- - - - - cam Ec - cle - si - - - - - am;

- - - - - cam Ec - cle - si - - - - - am;

- sto - li - cam Ec - cle - si - - - - - am;

133

con - fi - te - or u - num ba - pti -

con - fi - te - or u - num ba - pti - - - -

con - fi - te - or u - num ba - pti - - - - sma in re -

136

- sma in re - mis - si - o - - - - nem pec - ca -

- sma in re - mis - si - o - - - - nem pec -

- mis - si - o - - - - nem pec - ca - to - rum, pec - ca - to -

139

et ex - spe - cto re-sur -

- to - - - - - rum; et

- ca - to - - - - - rum; et ex -

- - - - - rum;

142

- re - cti - o - nem, et ex - spe - cto re-sur - re - cti - o - - - -
 ex - spe - cto re-sur-re - cti - o - - - - nem, et ex - spe - cto re-sur -
 - spe - - - - cto re - sur - re - cti - o - - - -

145

- nem, et ex - spe - cto re-sur - re - cti - o - - - - nem, re - sur - re - cti - o - nem
 - re - cti - o - - - - nem, re - sur - re - cti - o - nem mor - tu - o - -
 - - - - nem mor - tu - o - - - -

148

mor-tu - o - rum, re - sur - re - cti - o - nem mor - tu - o - rum
 - rum, re - sur - re - cti - o - nem mor - tu - o - rum et vi -
 - rum, mor - tu - o - - - - rum et vi - tam ven -
 et vi -

152

et vi - tam ven - tu - ri sae - cu -
 - tam ven - tu - - ri sae - cu - li. A -
 - tu - ri sae - cu - - li, sae - cu - li. A -
 - tam ven - tu - - tam - ri sae - cu - -

155

- li. A - - - - -
 - - - - -
 - - - - -
 - li. A - - - - -

158

- - - - - men.
 - - - - - men.
 - - - - - men.
 - - - - - men.

Sanctus

2 rulers of the choir

San - - - ctus,

San - - - ctus, San - - -

San - - -

San - - -

4

- - - ctus, San - - -

- - -

- - -

- ctus, San - - -

7

- - - ctus, San - - -

- - -

- ctus, San - - - ctus, San - - -

- - -

10

- ctus, *San* - - - - - ctus, *San* - - - - - ctus,

- - - ctus, *San* - - - - - ctus,

- ctus, *San* - - - - - ctus,

14

Do - mi-nus De - us Sa - ba -

Do - mi-nus De - us Sa - ba - oth, *Do - mi-nus*

Do - mi-nus De - us Sa - ba - oth, *Do - mi-nus De -*

17

- oth, *Do - mi-nus De - us Sa - ba - oth, Do - mi-nus De - us*

De - us Sa - ba - oth, Do - mi-nus De - us Sa - ba - - - -

- us Sa - ba - - - - oth, *Do - mi-nus*

20

Sa - ba - oth, Do - mi-nus De - us Sa - ba - oth;
 - oth, Do - mi-nus De - us Sa - ba - oth, Sa - ba - oth;
 De - us Sa - ba - oth, Do - mi-nus De - us Sa - ba - oth;

24

ple - ni sunt cae - li - - - - -
 ple - ni - - - - - sunt, ple - ni sunt cae - li - - - - -
 ple - ni sunt cae - li et ter - - - - - ra, ple - ni sunt

29

- li, ple - ni sunt cae - li et ter - - - - - ra,
 - - - - - et ter - - - - - ra, ple - ni sunt cae - li et
 cae - li et ter - - - - - ra, ple - ni sunt cae - li et ter -

34

ple - ni sunt cae - li et ter - - - - -
 ter - - - - - ra glo - ri - a
 - ra, ple - ni sunt cae - li et ter - ra glo -

38

O - san - na in ex - - - - -
 - ra glo - ri - a tu - - - - - a;
 tu - - - - - a;
 - ri - a tu - - - - - a; O - - - - -

43

- cel - - - - - sis,
 O - san - na in ex - cel - - - - - sis, O - - - - -
 - san - - na in ex - cel - sis, O - san - na in ex - cel -

48

O - san - na in ex - cel - sis,
 - - - - - sis, O - san - na in ex - cel -
 - san - na in ex - cel - - - - sis, O - san - na in ex -
 - - - - -

53

O - san - na in ex - cel - sis, O - san - na in ex -
 - sis, O - san - na in ex - cel - - - - -
 - cel - - - - sis, O - san - na in ex - cel -
 - - - - - sis, O -

57

- cel - sis, O - san - na in ex - cel - sis,
 - sis, O - san - na in ex - cel - sis, O - san - na in ex - cel -
 - - - - - sis, O - san - na in ex -
 - san - na in ex - cel - - - - -

61

O - san - na in ex - cel - - - - sis, O -
- sis, O - san - na in ex - cel - sis, O - san - na in ex -
- cel - - - - - sis, O - san - na in ex - cel -
- sis, O - san - na in ex - cel - - - - -

Detailed description: This block contains the musical notation for measures 61 through 64. It features four staves: three vocal staves (Soprano, Alto, and Tenor) and one bass line. The music is in a 4/4 time signature with a key signature of one flat (B-flat). The lyrics are: "O - san - na in ex - cel - - - - sis, O - sis, O - san - na in ex - cel - sis, O - san - na in ex - cel - - - - - sis, O - san - na in ex - cel - - - - -".

65

- san - na in ex - cel - - - - sis, O - san - na in ex - cel - sis.
- cel - sis, O - san - na in ex - cel - - - - sis.
- sis, O - san - na in ex - cel - - - - sis.
- sis, O - - - - san - na in ex - cel - sis.

Detailed description: This block contains the musical notation for measures 65 through 69. It features four staves: three vocal staves (Soprano, Alto, and Tenor) and one bass line. The music is in a 4/4 time signature with a key signature of one flat (B-flat). The lyrics are: "- san - na in ex - cel - - - - sis, O - san - na in ex - cel - sis. - cel - sis, O - san - na in ex - cel - - - - sis. - sis, O - san - na in ex - cel - - - - sis. - sis, O - - - - san - na in ex - cel - sis." There are fermatas over the final notes of each vocal line in measures 65, 66, and 67.

70

Be - ne - di - - - -
Be - ne - di - - - -
Be - - - - ne - - - - di - - - -

Detailed description: This block contains the musical notation for measures 70 through 73. It features four staves: three vocal staves (Soprano, Alto, and Tenor) and one bass line. The music is in a 4/4 time signature with a key signature of one flat (B-flat). The lyrics are: "Be - ne - di - - - - Be - ne - di - - - - Be - - - - ne - - - - di - - - -".

75

ctus qui ve - nit,
 ctus qui ve - nit, qui ve -
 ctus qui ve - nit, qui ve -

80

qui ve - nit, qui ve - nit,
 nit, qui ve - nit, qui ve -
 - nit, qui ve - nit, qui ve - [nit, qui ve -

85

nit in no - mi - ne Do - mi - ni, in no - mi -
 nit in no - mi - ne Do - mi - ni, in
 - ve] nit

89

- ne Do - mi - ni, in no - mi - ne Do - mi -
no - mi - ne Do - mi - ni, in no - mi - ne Do -
in no - mi - ne, in

93

- - - - ni, in no - mi - ne Do - mi - - - - ni,
- mi - - - - ni, in no - mi - ne Do - mi - - - -
no - mi - ne Do - mi - - - -

98

in no - mi - ne Do - mi - - - - - - - - - - - - - - - -
- - - - - - - - - - - - - - - - ni, in no - mi - ne Do - mi - - - - - - - - - - - - - - - -
- ni, in no - mi - ne Do - - - - mi - - - -

102

- ni, in no-mi-ne Do - mi - - - - ni;

- - - - ni, in no - mi - ne Do - mi - - - - ni;

- - - - - - - - - - - - - - - - - - ni;

107

O - san - na in ex -

O - san - na in ex - cel - - - -

O - san - na in ex - cel - - - - - - - - - -

O - san - na in ex - cel - - - - - - - - - -

110

- cel - - - - sis, O - san - na in ex - cel - - - -

- sis, O - san - na in ex - cel - - - - - - - - - -

- sis, O - san - na in ex - cel - - - - - - - - - - sis, O -

113

- - - - - sis, O - san - na in ex -
 - sis, O - san - na in ex - cel - - - -
 - san - na in ex - cel - - - -
 - - - - - sis, O - san - na

116

- cel - - - sis, O - san - na in ex - cel - - - sis,
 - - sis, O - san - na in ex - cel - - -
 - - - - - sis, O - san - na
 in ex - cel - - - -

119

O - san - na in ex - cel - - - - sis.
 - - - - - sis, O - san - na in ex - cel - - - sis.
 in ex - cel - - - - sis.
 - - sis, O - san - na in ex - cel - - - sis.

Agnus Dei

2 rulers of the choir

A - gnus De - i,

qui tol - lis pec - ca - ta mun - di, qui
qui tol - lis pec - ca - ta mun -

tol - lis pec - ca - ta mun - di, qui tol - lis pec - ca - ta mun -
- di, qui tol - lis pec - ca - ta mun -
- di, qui tol - lis pec - ca - ta mun -

- di, pec - ca - ta mun - di, pec - ca - ta mun - di:
- di, pec - ca - ta mun - di, pec - ca - ta mun - di:
- di, pec - ca - ta mun - di:

11

mi - se - re - re no - - - bis,

mi - se - re - re no - - - bis, mi - se -

mi - se - re - re no - - -

14

mi - se - re - re no - - - bis, mi - se - re - re

- re - re no - - - bis,

- - - bis, mi - se - re - re no -

17

no - - - bis.

mi - se - re - re no - - - bis.

- - - bis.

21

A - gnus De - - - - i,

A - - - gnus De - - - -

A - gnus De - - - -

25

qui tol - lis pec-ca - ta mun - - - di, qui tol - lis pec -

- - - - i, qui

- - - - i, qui tol - lis pec - ca - ta mun - - - -

29

- ca - ta mun - di, qui tol - lis pec-ca - ta mun - - - -

tol - lis pec-ca - ta mun - - - -

- di, qui tol - lis pec - ca - ta mun - - - di, qui tol - lis pec-ca - ta

33

- - - di, pec - ca - ta mun - - di:

- - - di, pec - ca - ta mun - - di:

mun - - di, pec - ca - ta mun - - di:

37

mi - se - re - re no - - -

mi - se - re - re no -

mi - se - re - - - re no - - -

41

- - - bis, mi - se - re - re no - - -

- - - bis,

44

- - - - bis, mi - se - re - re no - - - - bis.

- bis, mi - se - re - re no - - - - bis.

mi - se - re - re no - - - - bis.

48

A - gnus De - - - - i, qui tol -

A - gnus De - - - -

A - gnus De - - - - i, qui

A - gnus De - - - - i, qui

51

- lis pec-ca-ta mun - di, qui tol - lis pec-ca-ta mun - - - - di, qui tol -

- i, qui tol - lis pec-ca-ta mun - di, qui tol - lis pec-ca-ta mun-di,

tol - lis pec-ca-ta mun - - - - di, qui tol - lis pec-ca-ta mun - di, qui

tol - lis pec - ca - ta mun - di, qui tol - lis pec - ca - ta

54

- lis pec-ca-ta mun - - - di: do - na
 pec - ca - ta mun - di:
 tol - lis pec-ca-ta mun - di: do - na no - bis
 mun - - - di: do - na no - bis pa -

57

no - bis pa - cem, do - na no - bis pa - - - - -
 do - na no - bis pa - - - - - cem, do - na
 pa - - - - - cem, do - na no -
 - cem, do - na no - bis pa - - - - -

59

- - - - - cem, do - na
 no - bis pa - - - - - cem, do - na no -
 - bis pa - - - - - cem,
 - cem, do - na no - bis pa - - - - -

61

no - bis pa - - - - - cem, do - na no - bis
 - bis pa - - - - -
 do - na no - bis pa - - - - -
 - - - - - cem, do - na no - bis

63

pa - - - - -
 - - - - - cem, do - na no - bis pa - - - - -
 - - - - - cem, do - na no - bis pa - - - - -
 pa - - - - - cem, do - na no - bis pa - - - - -

65

- - - - - cem. _____
 - - - - - cem. _____
 - - - - - cem. _____
 - - - - - cem. _____

Editorial Conventions

The nomenclature of the voice-parts follows the Tudor convention.

The original clef, staff signature, mensuration symbol and first note of each part are shown on the prefatory staves. Subsequent mensuration symbols are shown above the staff.

Editorial accidentals are placed above the notes concerned and remain operative throughout the bar. Accidentals not present individually in the source but implied by the original staff signatures are placed before the note and have a superscript dot.

Ligatures are denoted by the sign \lrcorner , coloration by the sign \ulcorner .

Spelling of the text has been modernised.

Text repetition signs in the underlay have been expanded editorially in italics.

Underlay between square brackets is entirely editorial.

Source

London, British Library Add. MSS 17802–5 (the ‘Gyffard Partbooks’, c.1572–8).

| | | | | |
|-------|-------|--------------------|---------------|---|
| 17802 | (Ct2) | f.194 ^v | at beginning: | Apon y ^e square by m ^f monday |
| 17803 | (Ct1) | f.193 | at beginning: | Apon the square by m ^f mondye |
| 17804 | (T) | f.187 ^v | at beginning: | Apon y ^e square by m ^f mondye |
| 17805 | (B) | f.176 | at beginning: | Apon the squar bi m ^f mondye |
| | | | at end: | mr W ^m mondye |

The celebrant’s intonations for the Gloria and Credo are taken from the *Graduale ad usum ecclesie Sarisburiensis* (Paris: François Regnault for Robert Redman, 1532), f.5^v of the Temporale and f.62^v of the Commune Sanctorum. The intonations for the rulers of the choir are given in all four partbooks. In MS 17802 the final two Cs of *Patrem omnipotentem* are miscopied as a single B with fermata. In the Agnus Dei intonation, *De-* consistently falls one note earlier, contrary to the usual Sarum reading. Additionally, in MSS 17802 and 17805 *Dei* is undivided, so that the last syllable falls under the second G. The Sanctus and Agnus intonations were appropriate for the Lady Mass.

The Music

Mundy composed two masses ‘Upon the Square’. Both appear uniquely in the Gyffard Partbooks together with a similarly named mass by William Whytbroke. The term ‘square’ seems to refer to a repertoire of mensural monophonic melodies, apparently culled from the tenor parts of fifteenth-century or earlier music, that were used as a basis for further polyphony, improvised or composed. Mundy’s mass uses a different square for each movement. His Kyrie square appears monophonically in British Library, Lansdowne MS 462, f.151^v (where is it assigned to Wednesdays); it was also used by Hyett in his Kyrie. The squares in the other movements are identical to those used by Whytbroke, although the two composers ornament them very differently.

All three masses ‘Upon the Square’ are nominally scored for two countertenors, tenor and bass, as is apparent whenever all four voices are singing. Whereas Whytbroke shares his squares between all four voices, always in the bass register, producing countertenor parts with extremely wide compasses, Mundy confines his squares almost entirely to the Tenor and Bass parts. In his first mass *Upon the Square* he allocates just once to a countertenor, again in the bass register (Kyrie, Ct2, bars 30–39). In the present mass there is again one section in which he gives the square to the Second Countertenor (Credo, bars 133–140), but here he transposes it up an octave. Clearly Mundy was more guarded than Whytbroke about asking his countertenors to sing bass. As in Whytbroke’s mass, occasional directs at clef changes suggest that the allocation of the squares was deliberate.

Unusually, both of Mundy’s masses have six-fold Kyries. There are no performance directions, so it is unclear whether a nine-fold scheme was to be effected and, if so, whether this was to be achieved by repeating sections, or by having an organist performing in alternation with the choir (a strict *alternatim* scheme is of course impossible). Whytbroke’s mass has a complete, nine-fold Kyrie, so maybe Mundy intended a similar scheme. This could be produced by repeating the first section of each invocation.

Notes on the Readings of the Source

In the notes below, each reference to a bar or group of bars is separated by an oblique stroke. Within these references multiple readings in the same voice are separated by commas and readings in different voices by semicolons. The order within each entry is: 1) bar number; 2) voice; 3) reading of the source. For extended references subsequent bar numbers are in brackets. Pitches are in capital letters, preceded by a number where necessary, e.g. ¹C = first note C in the bar. Note values are abbreviated in italics. The sign + denotes a tie. References to staff signatures are at the transposed pitch of the edition, so ‘b for E’ equates to a B^b signature in the original. F#s in the original (B#s in the transcription) are routinely cancelled by a letter F.

Kyrie

8 T clef C4 / 15 Ct1 Ct2 T B mensuration symbol Φ / 17 Ct2 F is *sb* / 22 B new line with clef C4 / 29 T new line with clef C3 / 36 Ct1 Ct2 T B mensuration symbol \mathbb{C} ; Ct2 two *m*-rests only in error for two (perfect) *sb*-rests; B clef C4 repeated after barline /

Gloria

1 Ct1 Ct2 T B mensuration symbol Φ ; B clef C5 / 10 Ct2 staff signature \flat for upper E at beginning of bar; T clef C5; B new line with clef C3 / 13 B new line with staff signature \flat for E begins with ¹A / 14 Ct2 new line without staff signature begins with E / 15 B no \flat for E / 17–18 Ct2 *adoramus* undivided below DDG+GFCE / 21 Ct2 \flat for E / 25 T clef C3; B clef C4, staff signature restated / 29 Ct1 \flat is a letter ‘f’ / 31 Ct1 \flat for E (perhaps implying that Es in 27 and 28 should be flattened?) / 37 T ³B is corrected A / 49 T clef C4 / 55 Ct2 *-te* ambiguously aligned below DC / 56 Ct1 *Christe* undivided below BAG; Ct2 new line with staff signature \flat for upper E begins with rest / 60 T clef C3; B clef C5 / 63 Ct1 *Dei* undivided below FC; B new line without staff signature begins with ¹F / 64–65 T *-gnus* ambiguously aligned below E²F; *De-* below G / 69 Ct2 new line without staff signature begins with E / 71 Ct1 Ct2 T B mensuration symbol \mathbb{C} ; T clef C4; B new line with clef C3, one *m*-rest omitted / 76 T clef C3; B clef C4 / 78 T *-nem* ambiguously aligned below F³B, (79) *no-* ambiguously aligned below A¹G / 79 Ct1 lines ends with C followed by direct F, blank staff at foot of page follows, notation continues on new page; B underlay ambiguously aligned, *-nem* possibly intended for E and *no-* for C / 82 Ct1 Ct2 T B mensuration symbol Φ ; T new line with clef C4; G new line with clef C3 / 86 B *dex-* ambiguously aligned below GF, *-teram Pa-* all one note later / 92 B staff signature \flat for E at start of bar; no change of clef although in 92–96 this part is the square / 93 B new line with staff signature \flat for E begins with F / 98 Ct1 new line with staff signature \flat for upper E begins with ¹E / 100 Ct1 \flat is a letter ‘f’ / 101 Ct1 new line without staff signature begins with C / 106 Ct1 Ct2 T B mensuration symbol \mathbb{C} ; T new line with clef C3; B clef C4, no staff signature / 107 B new line without staff signature begins with F / 108–109 Ct2 *cum sanc* crossed through below D³CB⁴C / 114 Ct2 *Pa-* ambiguously aligned below ²FD, (115) *-tris* separate and ambiguously aligned below DC / 115 Ct1 \flat for E is before C at start of new line (cancelling \flat on previous line) / 116 Ct2 *gloria* undivided / 120 Ct2 *-tris A-* one note earlier / 123 Ct1 \flat for E /

Credo

1 Ct1 Ct2 T B mensuration symbol \mathbb{C} ; B clef C5 / 8 T clef C4; B clef C3 / 12 Ct2 B is *sb* / 14 Ct2 \flat for B (not in 15) / 16 B clef C4 / 21 Ct1 Ct2 T B mensuration symbol Φ ; B clef C3 / 43 T clef C3; B clef C4 / 54 Ct1 Ct2 T B mensuration symbol \mathbb{C} / 57 Ct2 \flat is a letter ‘f’ / 62 T \flat is a letter ‘f’ / 71 T clef C4; B no change of clef (C4 continues) / 77 Ct1 Ct2 T B mensuration symbol Φ / 79–80 Ct2 *dexteram* undivided below ²F²E²D¹C / 83 B # for C (intended for E?) / 86 Ct1 Ct2 T B mensuration symbol \mathbb{C} ; T no change of clef, *dot-sb-rest* is *m-rest* / 93 Ct2 \flat is a letter ‘f’, *regni* undivided BAGF / 96 Ct1 Ct2 T B mensuration symbol Φ ; B new line with clef C3 / 111 B clef C4 / 117–118 Ct1 Ct2 B *cum glorificatur* for *conglorificatur* / 118–119 Ct2 *et conglorifica-* all one note later / 126 Ct1 Ct2 T B mensuration symbol \mathbb{C} ; B clef C3 before A / 128 B ³G is *crG crG*, (127–128) *Aposto-* one note earlier / 133 B \flat for B (in form of a letter ‘f’) before F / 135 T superfluous *mB* before D / 142 Ct2 *expecto re-* ambiguously aligned below GCBAGA, (142–143) *-surrectio-* ambiguously aligned below ¹F³G¹E²F²E / 151 T clef C3; B clef C4; B mensuration symbol \mathbb{C} restated before A /

Sanctus

1 Ct1 Ct2 T B mensuration symbol Φ ; Ct2 ‘Sanctus’ below staff / 8 T \flat for E / 9 T \flat is a letter ‘f’ / 14 Ct2 mensuration symbol Φ restated / 24 Ct1 Ct2 T B mensuration symbol Φ ; T clef C4; B clef C3 / 41 T clef C3; B clef C4 / 55 Ct2 B is a corrected *m* / 70 Ct1 Ct2 T B mensuration symbol Φ restated; T clef C4 / 97 Ct2 B is *dot-sb* / 102 T superfluous *mC* before C / 107 Ct1 Ct2 T B mensuration symbol \mathbb{C} ; T clef C3 / 110 Ct2 \flat is a letter ‘f’ / 112 Ct2 G is F / 121 Ct1 \flat for ²B (and ¹B); T \flat for E /

Agnus

In the intonation the first syllable of *Dei* is placed one note too early in all partbooks (as it is in the other masses discussed above). The usual Sarum reading has been restored editorially.

1 Ct1 Ct2 T B mensuration symbol Φ / 18 T rest is perfect *b-rest* / 19 Ct1 \flat for E / 21 Ct1 Ct2 T B mensuration symbol Φ ; T clef C4; B clef C3 / 34–35 B *-di peccata mun-* all one note later / 35 B # for ¹A (in addition to \flat for ¹B) / 48 Ct1 Ct2 T B mensuration symbol \mathbb{C} ; T new line with clef C3; B new line with clef C4 / 51 Ct2 \flat for B / 56 Ct1 Ct2 T B mensuration symbol \mathbb{C} / 64 B superfluous *sbF*, *dona nobis pa-* begins below this note /