

Miserere in c-moll

für 2 Soprani, 2 Alt, Frauenchor, Streicher und Basso continuo

No. 1 Coro e Soli: Miserere mei

Psalm 51

Johann Adolph Hasse
(1699-1783)**Non troppo lento**

7

f *p*

13

19

25

p

30

35

p

40

45

f

50

p

55



62



No. 2 Arie: Tibi soli peccavi

Andante



5



9



14



20



25



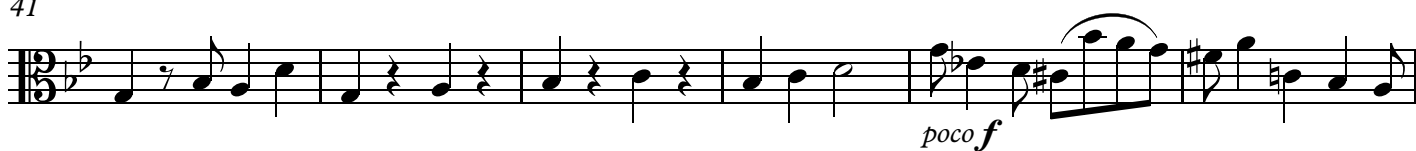
30



36



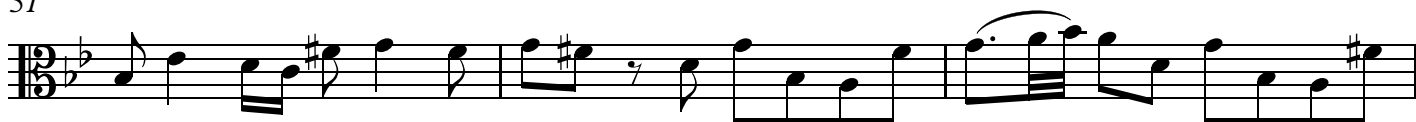
41



47



51

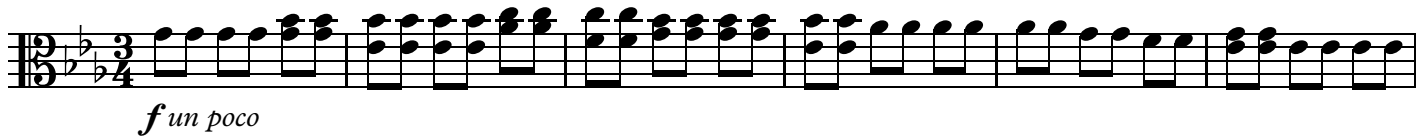


54



No. 3 Coro e Soli: Ecce enim iniquitatibus

Andante



7



13



18



23



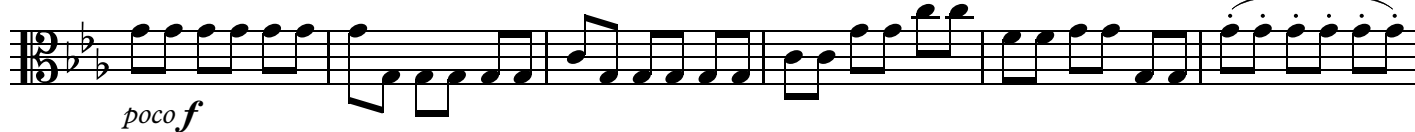
28



33



37



43



49



55



61



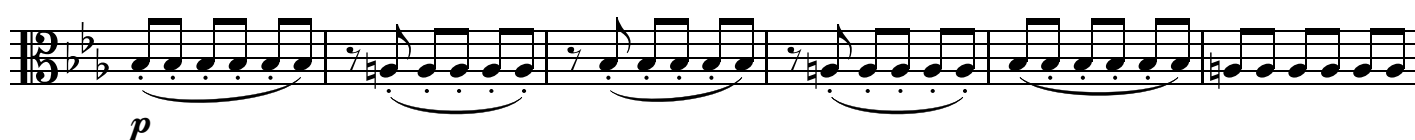
67



71



77



83



87



91



96



101



106

(1) (2) (3) (4)



111

(5) (6) (7) (8)

116 **Un poco più Andante**

121



126



130



135



140



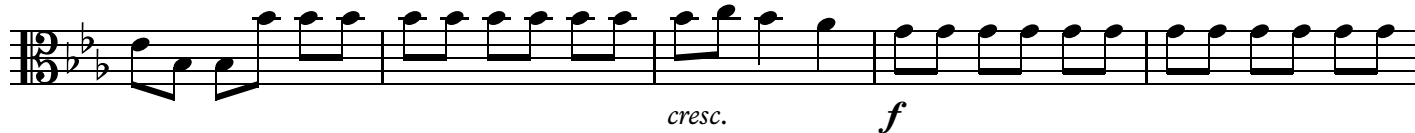
145



150



155



160



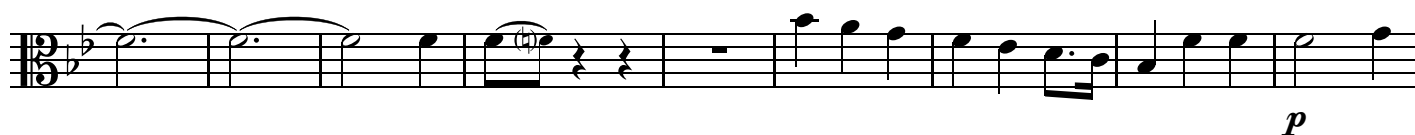
No. 4 Duetto: Libera me de sanguinibus Deus

Lento

(1) (2) (3) (4) (5) (6)



12



21



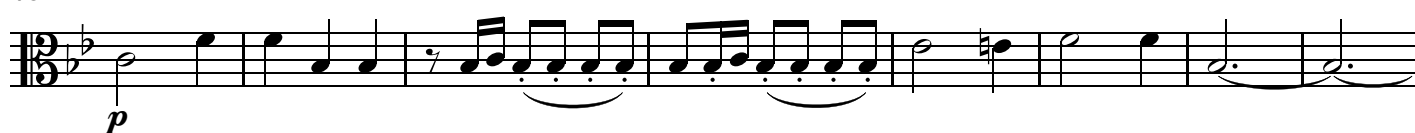
30



40



48



56



65



75



85

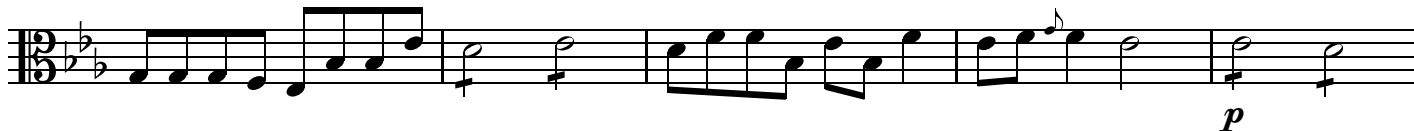


No. 5 Aria: Quoniam si voluisses

con sord.



6



11



16



21



27



33



37



No. 6 Coro e Soli: Benigne fac Domine

Più tosto Allegro

senza sord.



6



11



15



20

Più Presto

25



30



34



39



44



48



53



58



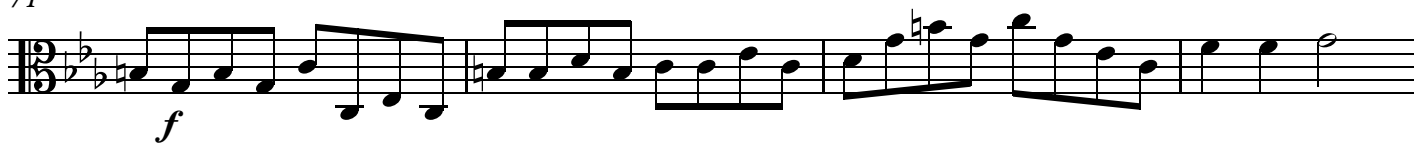
63



67



71



75

