

TWENTYFIRST EDITION.

GLORY TO GOD IN THE HIGHEST.

Christmas Anthem

BY

CALEB SIMPER.

ORGANIST AND CHOIRMASTER OF ST MARY MAGDALENE . WORCESTER.
(Composer of FIRST ORCHESTRA PRIZE TUNES, "ROCK OF AGES" & "LEAD KINDLY LIGHT.")

LONDON:

WEEKES & CO., 14, HANOVER ST., REGENT ST., W.

Price 3^d

LUKE II. V. 14. 11. 32.

♩ = 112.

ORGAN.

Sw. *f* *sf*

Man. Ped.

Detailed description: Organ introduction in G major, 4/4 time. The right hand starts with a treble clef and a key signature of one sharp (F#). The left hand starts with a bass clef. The music features a series of chords and moving lines, with dynamics ranging from *f* to *sf*. Pedal points are indicated at the end of the first and second measures.

TREBLE. *f*

ALTO. *f*

TENOR. *f*
(*give lower.*)

BASS. *f*

Glo - - ry Glo - - ry Glo - ry to God Glo - ry to God in the

Glo - - ry Glo - - ry Glo - ry to God Glo - ry to God in the

Glo - - ry Glo - - ry Glo - ry to God Glo - ry to God in the

Glo - - ry Glo - - ry Glo - ry to God Glo - ry to God in the

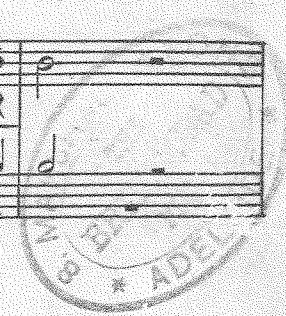
Detailed description: Four-part vocal setting of the hymn. The vocal parts are Treble, Alto, Tenor, and Bass. Each part begins with a dynamic marking of *f*. The lyrics are: "Glo - - ry Glo - - ry Glo - ry to God Glo - ry to God in the". The music is in G major and 4/4 time.

ORGAN.

Ped.

Detailed description: Organ accompaniment for the vocal parts. It features a treble clef and a bass clef. The music is in G major and 4/4 time. It includes a pedal point in the left hand. Dynamics include *f* and *sf*.

W. 1987.



ff high - est *mf* Glo - ry to God... in the high - est...
mf high - est Glo - ry to God... in the high - est...
mf high - est Glo - ry to God... in the high - est...
ff high - est Glo - ry to God... in the high - est...
ff Ped. *mf* - 100.

Glo - ry to God in the high - est... Glo - ry to God in the
 Glo - ry to God in the high - est... Glo - ry to God in the
 Glo - ry to God in the high - est... Glo - ry to God in the
 Glo - ry to God in the high - est...
mf

high - est... Glo - ry to God in the high - est... *slower.*
 high - est... Glo - ry to God in the high - est... *slower.*
 high - est... Glo - ry to God in the high - est... *slower.*
 Glo - ry to God in the high - est... And on *slower*

good will towards men good will towards men
 good will towards men good will towards men
 good will towards men good will towards men
 earth peace... And on earth peace...

a tempo.
 Glo-ry to God in the high-est Glo-ry to God in the high-
a tempo.
 Glo-ry to God in the high-est Glo-ry to God in the high-
a tempo.
 Glo-ry to God in the high-est Glo-ry to God in the high-
a tempo.
 Glo-ry to God in the high-est Glo-ry to God in the high-
f a tempo.

- est... Glo-ry to God in the high-est... Glo-ry to God in the
 - est... Glo-ry to God in the high-est... Glo-ry to God in the
 - est... Glo-ry to God in the high-est... Glo-ry to God in the
 - est... Glo-ry to God in the

high - est in the high - est. *ff* *Fine.*

high - est in the high - est. *ff* *Fine.*

high - est in the high - est in the high - est. *ff* *Fine.*

high - est in the high - est in the high - est. *ff* *Fine.*

Fine.

TREBLES ONLY. (or TREBLE or TENOR SOLO.) *with expression.*

♩ = 108. For un - to you... is

p *Soft Ped.*

born this day in the ci - ty of Da - vid a Sa - viour

For un - to you is born this day in the ci - ty of Da - vid a

mf
 Sa - - viour For un - to you is born this day in the ei - ty of
 For un - to you is born this day in the ei - ty of
 For un - to you is born this day in the ei - ty of
 For un - to you is born this day in the ei - ty of

Da - vid a Sa - - viour For un - to you is born this day in the
 Da - vid a Sa - - viour For un - to you is born this day in the
 Da - vid a Sa - - viour For un - to you is born this day in the
 Da - vid a Sa - - viour For un - to you is born this day in the

rall. en - tan - do.
 ei - ty of Da - vid a Sa - - viour which is Christ the Lord Christ the Lord.
rall. en - tan - do.
 ei - ty of Da - vid a Sa - - viour Christ the Lord Christ the Lord Spirito.
rall. en - tan - do.
 ei - ty of Da - vid a Sa - - viour Christ the Lord Christ the Lord To Spirito.

rall. en - tan - do.
 ei - ty of Da - vid a Sa - - viour Christ the Lord which is Christ the Lord, To Spirito.

Spirito.

D.C.

D.C.

D.C.

D.C.

D.C.

Ped. gres

Also of the same Composer.

- He is risen. 10th Edition. *Easter*. and Why seek ye? 3rd Ed: *Easter*. each 3^d
- And, behold, there was a great earthquake. 2nd 1000. *Easter*. 3^d
- And when the day of Pentecost. 2nd Ed: *Whitsunday*. 3^d
- And God said, let the earth. 12th Ed: *Harvest*. and They that sow. 3rd Ed: each 3^d
- O Lord, how manifold. 3rd 1000. *Harvest*. 4^d
- Make a joyful noise. *Festival Anthem*. 2nd 1000. 3^d
- Behold I bring. 6th Ed: *Christmas* and There were Shepherds. 4th Ed: each 3^d
- And He shall reign. 2nd 1000. *Advent or Christmas*. 3^d
- Easy Te Deum in F. 2nd Ed: and Six Kyries. each 3^d
- Magnificat and Nunc Dimittis in F. 3rd Ed: 3^d
- March in D for Organ or Harmonium. each 2/ net.