

# In manus tuas (2nd setting)

Edited by Jason Smart

John Sheppard (d.1558)

[1 clerk of the second form]

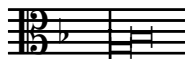


In ma - nus tu - as,

Tenor 1



Tenor 2



Baritone



Bass



Do - - - - -  
Do - - - - - mi - - - - -  
Do - - - - - mi - ne, - - - - -  
Do - - - - - [mi] - - - - -

5

**A**

- mi - - - - - ne, com - men - do, com - men - do spi - ri - tum me - - - - -  
- - - - - ne, com - men - do spi - ri - tum me - um, spi - - - - -  
com - men - do - - - - -  
- - - - - ne, com - men - do - - - - - spi - ri - - - - -

11

- - - - -  
- ri - tum me - - - - -  
spi - ri - - - - - tum - - - - -  
- tum me - - - - - um, - - - - - com - men - - - - -

me - - - - - um. - - - - -

- do spi - - ri - tum me - - - - - um.

[1 clerk of the second form]

Re - - de - mi - sti me, Do - mi - ne De - us ve - ri - ta - tis.\_\_\_\_\_

**REPEAT FROM A TO END, THEN FROM BEGINNING TO END**

#### Translation

Into thy hands, O Lord, I commend my spirit. For thou hast redeemed me, O Lord, thou God of truth. (*Ps.31, v. 6*)

#### Liturgical Function

Respond at Compline from Passion Sunday to Wednesday in Holy Week in the Use of Salisbury.

#### Editorial Conventions

The prefatory staves show the original clef, staff signature, mensuration symbol and first note of each part. Ligatures are indicated by the sign .

#### Sources

Polyphony: United Kingdom, London, British Library Add. MSS 17802-5 (c.1572-c.1578).

17802 (T2) f.118v at beginning: In manus Corus m<sup>f</sup> sheperde

17803 (T1) f.112v at beginning: In manus Corus m<sup>f</sup> sheperde  
at end: sheperde

17804 (Bar) f.116 at beginning: In manus Corus sheperde

17805 (B) f.108v at beginning: In manus Corus m<sup>f</sup> sheperde

Plainsong: *Antiphonale Sarisburiense*, ed. W. H. Frere (London, 1901-25), pl.190.

#### Notes on the Readings of the Polyphony

Bars 3-4, Bar: *-mine* one note later

Bars 5-6, Bar: A is semibreve (only) with fermata

Bars 11-12, Bar: *-do spi-* below GF, (bars 14-15) *-ritum* below FG

Bar 18, Bass: Flat for B

In their settings of the Compline responds *In manus tuas* and *In pace*, Tudor composers traditionally provided polyphony for those parts of the chant sung by the soloist. The manuscripts' heading for the present piece, *In manus Corus*, reflects the fact that Sheppard, unusually, has set the section of the chant sung by the chorus. The baritone part has the plainsong as a cantus firmus.