

Te Deum

a 8 voix avec fl. et violons (H.145)

Marc-Antoine Charpentier
(1672)

Basse Continue

1. Te Deum Laudamus

tous *orgue seul* *tous*

14

petit ch. *tous*

21

petit ch. *tous* *petit ch.*

29

37

tous

45

acc[ompagnement] seul

53

61

69



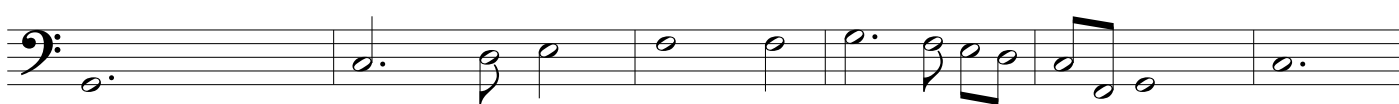
76



84



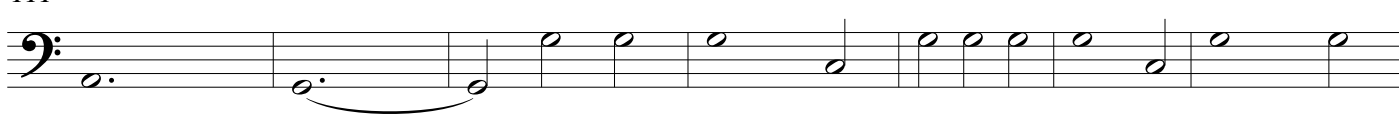
91

97 *orgue et basse continu*

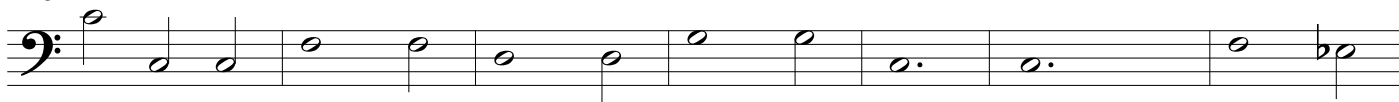
104



111



118



125

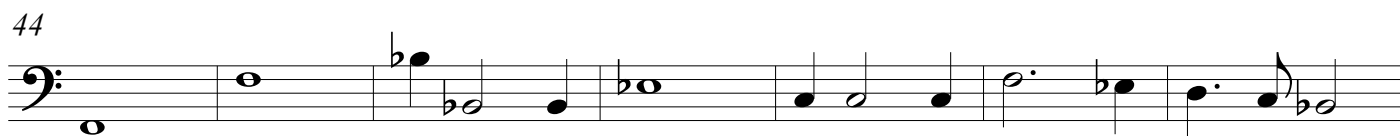
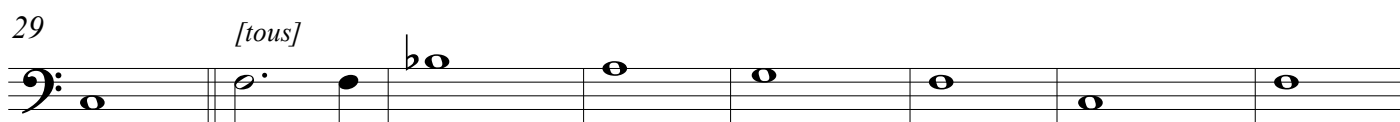
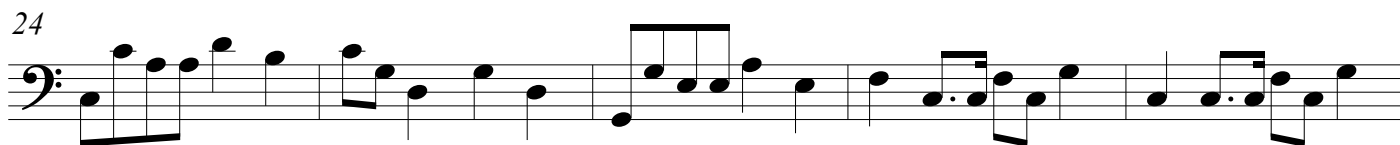
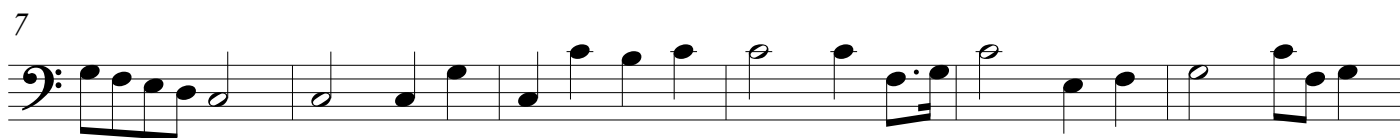
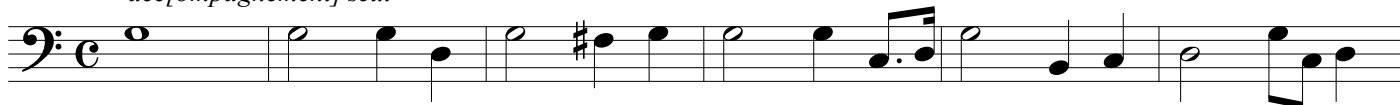


*Passez a la suite sans
Interruption*

2. Tibi Cherubim

guay

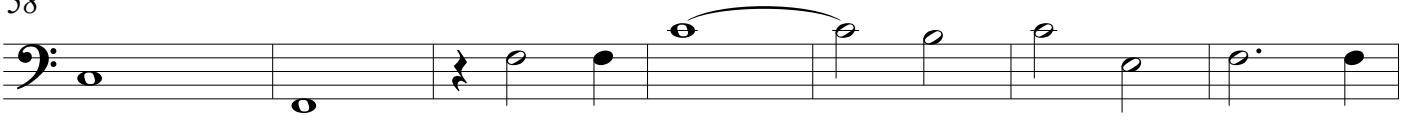
acc[ompagnement] seul



51



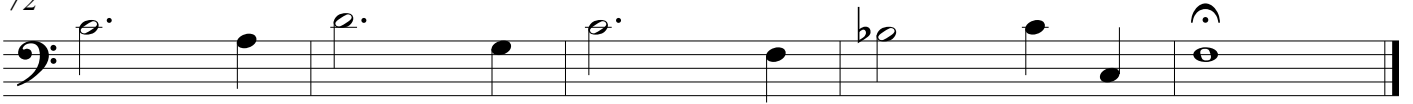
58



65

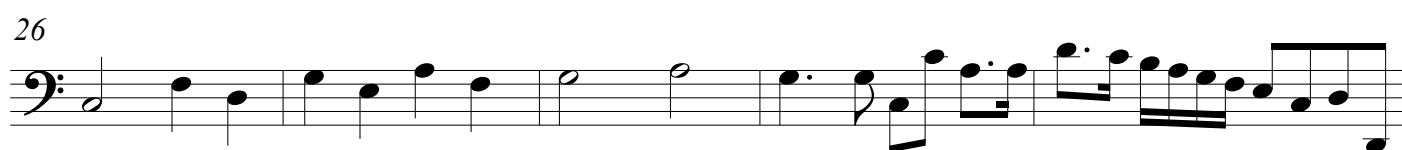
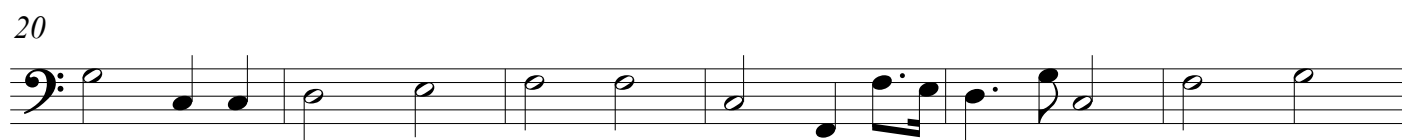
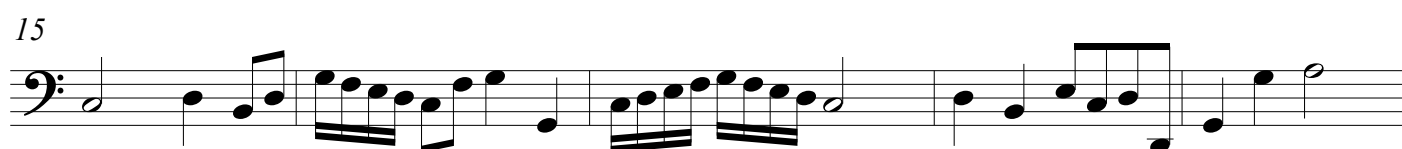
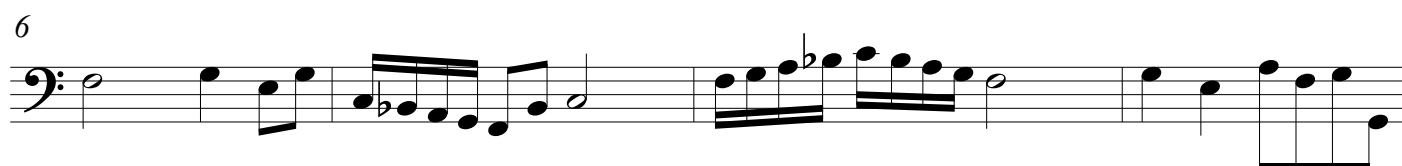


72



*Suivez apres une
petite pause*

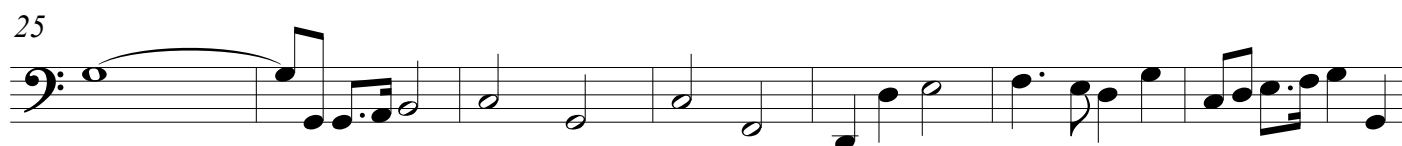
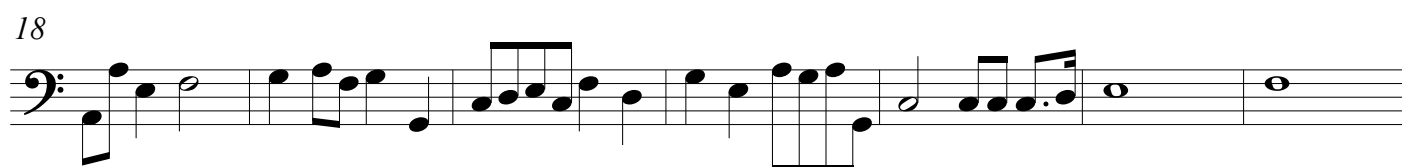
3. Te Gloriosus



40



5. Tu Rex Glorïae



60 guay



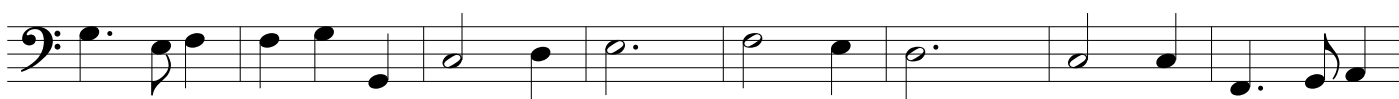
69



78



86



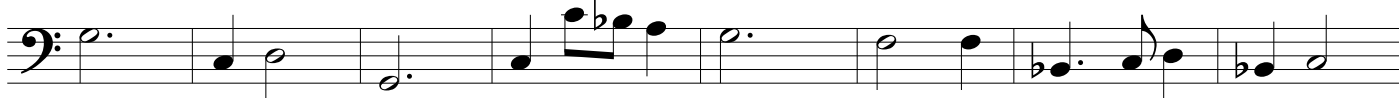
94



103



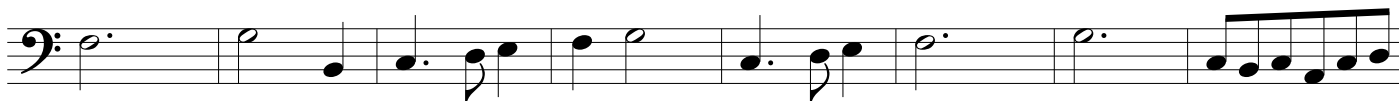
112



120



129



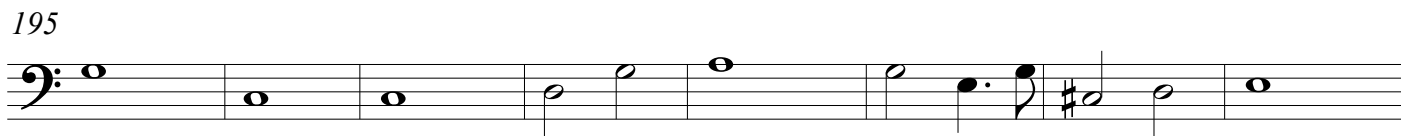
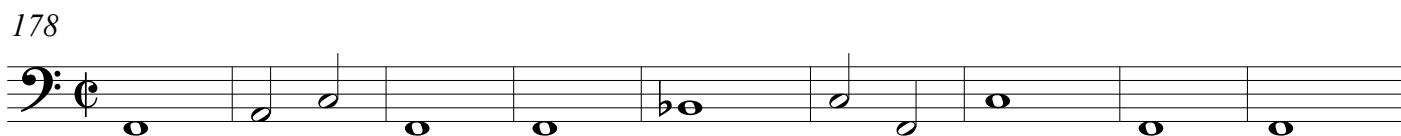
137



vio[lo]ns avec sourdines orgue et basses contin. avec sourd.[ines]

[illegible]

Musical notation for the bass line of 'The Rose Tree'. The key signature is one flat (B-flat). The melody consists of the following notes: G2, A2, Bb2, A2, G2, F2, E2, D2, C2, Bb1, A1, G1, F1, E1, D1, C1. The piece ends with a double bar line and a repeat sign.

[illegible]

[illegible]

The bass line of 'The Rose Tree' is written on a single staff with a bass clef. It consists of 12 measures. The notes are: G2 (quarter), A2 (quarter), B2 (quarter), C3 (quarter), D3 (half), E3 (quarter), F3 (quarter), G3 (quarter), A3 (quarter), B3 (quarter), C4 (half), and D4 (half). The key signature has one sharp (F#), and the time signature is 4/4.

The musical notation for the bass staff shows a sequence of notes across eight measures. The first measure contains a whole note G2. The second measure has two eighth notes, F2 and E2. The third measure has a quarter note D2 followed by a dotted half note C2. The fourth measure has a whole note B1. The fifth measure has two eighth notes, A1 and G1. The sixth measure has a quarter note F1 followed by a dotted half note E1. The seventh measure has a whole note D1. The eighth measure has two eighth notes, C1 and B0.

[illegible]

A musical staff in bass clef showing the bass line of the song. The melody consists of eighth and quarter notes, with some notes beamed together. The key signature has one flat (B-flat).

[illegible]

The bass line of 'The Rose Tree' is written on a single staff. It begins with a bass clef and a common time signature. The melody starts on a whole note G2, followed by a half note A2, and then a half note B2 with a sharp sign. This is followed by a quarter note G2, then a half note F2, and another half note G2. The next measure contains a half note E2, a quarter note D2, and a quarter note C2. This is followed by a half note B1, a quarter note A1, and a quarter note G1. The final measure consists of a half note F1, a quarter note E1, and a quarter note D1. The piece ends with a double bar line.

[illegible]

Musical notation for the bass line of 'The Rose Tree'. The key signature has one flat (B-flat). The melody starts on a whole note G2, followed by a half note F2, and then a quarter note E2. The next measure contains a quarter note D2, a quarter note C2, and a quarter note B1. The final measure consists of a half note A1 and a half note G1.

[illegible]

faites ici une petite pause

6. Dignare Domine

Lent



7



12



18



23



29



34



orgue et basse continu



50



60

