

To Catherine Anne Sanna (née Christie)

Miserere

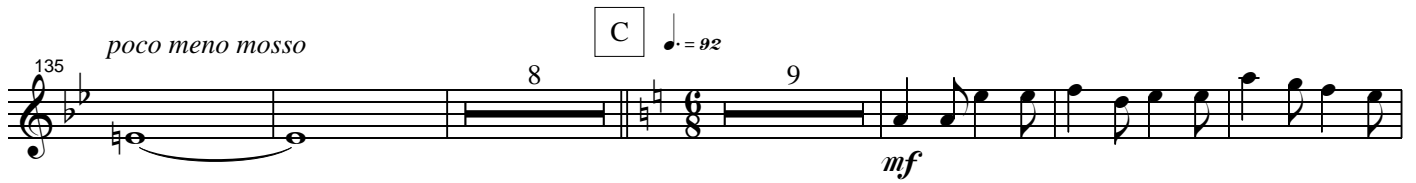
Sacred Cantata in 5 Parts

Op. 62 (rev. 2008)

Trumpet 1
(Brass choir/soprano)

Louie Madrid Calleja (1973 -)

The musical score for Trumpet 1 is written in treble clef with a key signature of one flat (Bb) and a time signature of 4/4. It consists of nine staves of music. The score includes various musical notations such as rests, notes, and slurs. Performance instructions include dynamics like *mf*, *ff*, and *mp*, and a tempo marking of *poco rit.*. There are two boxed sections labeled 'A' and 'B'. Section A is located between measures 5 and 11, and Section B is between measures 67 and 73. Measure numbers 4, 5, 12, 19, 25, 27, 33, 41, 43, 51, 53, 61, 68, 79, 86, 88, and 94 are indicated at the beginning of their respective staves. The score concludes with a final *f* dynamic marking.



poco rit. D $\text{♩} = 88$ *Recitative*

228 2 15 245 10 255 20 276 9

A tempo $\text{♩} = 72$ *poco meno mosso* E $\text{♩} = 92$

285 19 304 5 *G.P.* 4 2 *mf*

318

324 $\text{♩} = 108$ 324 *f*

331

338

345 3 $\text{♩} = \text{♩}$ 350

353 *p* *mp*

360 *Ritardando* *A tempo (come prima)* $\text{♩} = 108$ 366

mf *f* *Molto ritard.*

368 6 374 15 5